

WENZHOU JIXIANG COMPOSITE PANEL CO.,LTD.

温州市吉祥板业有限公司



## C 目录 CONTENTS



**ALUSIGNPANEL®**

**YBOND®**

01

Brief Introduction

02

Product Categories

03

Main Projects



## 01 Brief Introduction

- ❑ About Us
- ❑ Production Lines
- ❑ Factory Warehouse
- ❑ Company Certificate







## About Us

- >> Company was founded in 2000
- >> Factory located in Yueqing Economy Industry Zone, Wenzhou city, Zhejiang province, China
- >> Over 300 employees
- >> Total 9 production lines
- >> Branch company: Shanghai Jixiang Composite Panel Co.,Ltd.
- >> **National High-tech Enterprise**
- >> Main brands: **ALUSIGNPANEL & YBOND**



**ACP Manufacturer Since 2000**

[www.alusignpanel.com](http://www.alusignpanel.com)



# Production Lines

## 6 ACP Production Lines

Daily output 30,000 square meters

## 1 A2 FR ACCP Production Line

Daily output 5,000 square meters

## 2 Coating Lines

Monthly output 1,200 tons



**ACP Manufacturer Since 2000**

[www.alusignpanel.com](http://www.alusignpanel.com)



# Factory Warehouse



**ACP Manufacturer Since 2000**  
[www.alusignpanel.com](http://www.alusignpanel.com)

# Company Certificate



ISO9001:2008  
ISO14001:2004  
OHSAS18001:2007



and product series have passed  
SGS, SGS-FR, CE,  
CTC National Standard



**ACP Manufacturer Since 2000**  
[www.alusignpanel.com](http://www.alusignpanel.com)



## 02 Product Categories

- ❑ Aluminum Composite Panel (ACP)
- ❑ A2 FR Aluminum Corrugated Composite Panel (ACCP)
- ❑ Color Coated Aluminum Coil





# Aluminum Composite Panel ( ACP/ACM )

01

## Main Structure

① Low density polythene (LDPE) / FR core

② Polymeric membrane

③ High intensity anti-rust aluminum sheet

④ Primer

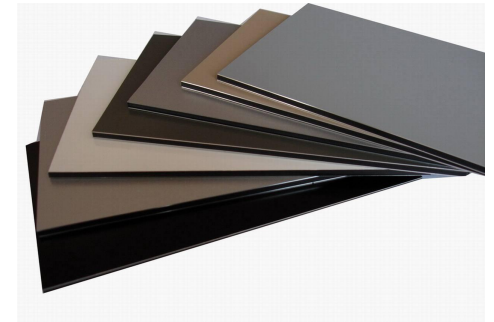
⑤ Polyester,PVDF,Nano,FEVE

⑥ Protective film



③ High intensity anti-rust aluminum sheet

② Polymeric membrane



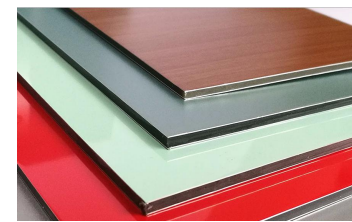
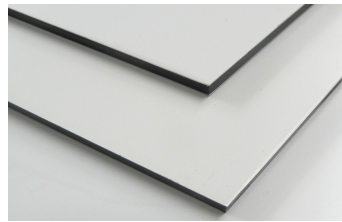
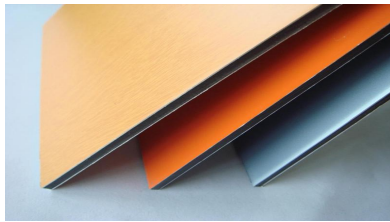
**ACP Manufacturer Since 2000**

[www.alusignpanel.com](http://www.alusignpanel.com)

# Aluminum Composite Panel ( ACP/ACM )

01

## Main Specification



- **Width:** 1220mm, 1250mm, 1500mm for order selection;
- **Length:** as per order, <5800mm is better; recommend 2440mm, 3050mm, 5000mm;
- **Panel thickness:** 2mm~6mm, recommend 3mm, 4mm;
- **Aluminum skin thickness:** 0.05mm~0.50mm; recommend 0.21mm, 0.30mm;
- **Coating:** PVDF Kynar, FEVE, Polyester(PE);
- **Core materials:** LDPE or FR core;
- **Standard size:** 1220\*2440mm (4'\*8')
- **OEM:** size & color & logo

**ACP Manufacturer Since 2000**

[www.alusignpanel.com](http://www.alusignpanel.com)



## Main Categories

# Aluminum Composite Panel ( ACP/ACM )

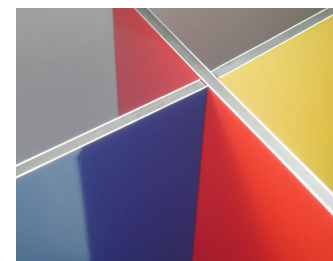
01



❑ PE ACP



❑ PVDF ACP



❑ FEVE ACP



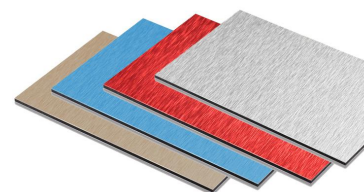
❑ PVDF Nano ACP



❑ Timber&Stone ACP



❑ Mirror ACP



❑ Brushed ACP

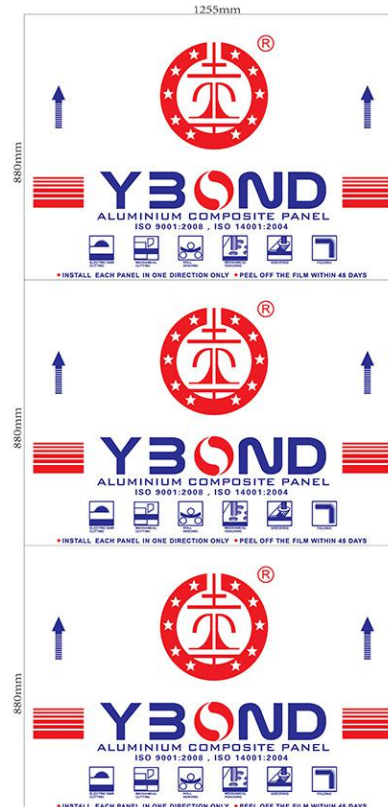


❑ FR ACP

## Protective Film

# Aluminum Composite Panel ( ACP/ACM )

01



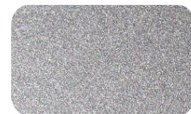


## Color Chart

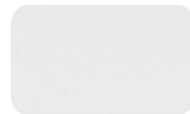
# Aluminum Composite Panel ( ACP/ACM )

01

### Metallic & Solid Colors



SJ-8001 Flash Silver



SJ-8011 Pure White



SJ-8013 Off White



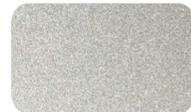
SJ-8002 Silver Grey



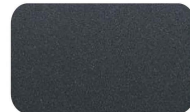
SJ-8014 Ivory White



SJ-8049 Black



SJ-8004 Champagne Silver



SJ-8005 Grey Metallic



SJ-8048 Galaxy Black



SJ-8006 Champagne Golden



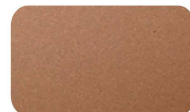
SJ-8008 Flash Gold



SJ-8030 Jade Metallic



SJ-8003 Aluminium



SJ-8009 Brown Copper



SJ-8080 Blue Metallic

### Metallic & Solid Colors



SJ-8037 Pure Yellow



SJ-8034 C-Red



SJ-8025 Post Green



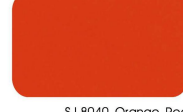
SJ-8038 Lemon Yellow



SJ-8017 Telecom Blue



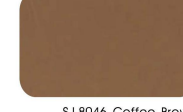
SJ-8021 Apple Green



SJ-8040 Orange Red



SJ-8019 Sea Blue



SJ-8046 Coffee Brown



SJ-8051 Light Gray

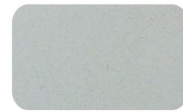


SJ-8052 Dark Gray



SJ-8043 Deep Rose

### Pearl Colors



SJ-8841 Pearl White

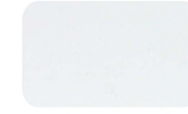


SJ-8817 Pearl Red



SJ-8821 Pearl Black

### Glossy Colors



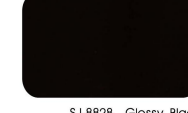
SJ-8825 Glossy White



SJ-8826 Glossy Red



SJ-8827 Glossy Green



SJ-8828 Glossy Black



SJ-8831 Glossy Yellow



SJ-8832 Glossy Blue

### Mirror & Brushed & Timber & Stone Colors



SJ-8822 Golden Mirror



SJ-8823 Silver Mirror



SJ-8053 Brushed Silver



SJ-T1 Timber Look



SJ-T2 Timber Look



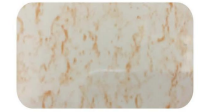
SJ-8058 Brushed Golden



SJ-T3 Timber Look



SJ-S1 Stone Look



SJ-S2 Stone Look

**ACP Manufacturer Since 2000**

[www.alusignpanel.com](http://www.alusignpanel.com)

## Packing Method

# Aluminum Composite Panel ( ACP/ACM )

01



### 3 main packing methods

- ① Bulk Packing    ② Wooden Pallet Packing    ③ Wooden Case Packing

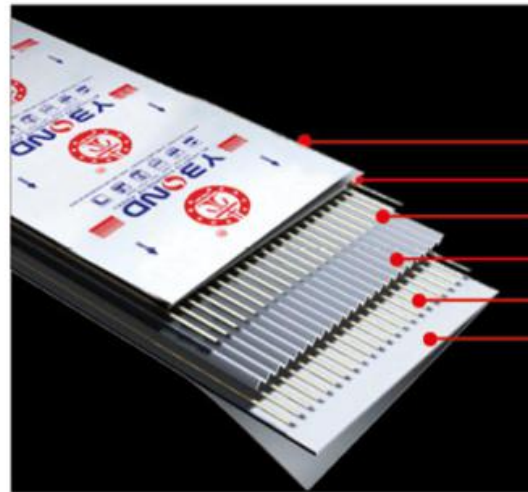


# NEW PRODUCTS

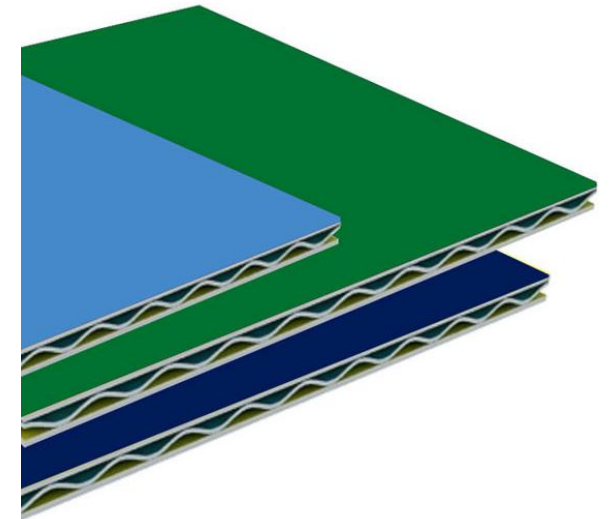
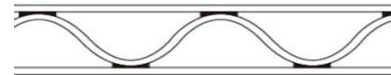
## A2 FR Aluminum Corrugated Composite Panel (ACCP)

02

### Main Structure



- YBOND Protective Film
- PVDF Ky or Polyester Coating Alu.Skin
- Adhesive Layer
- Aluminum Corrugated Core
- Adhesive Layer
- Service Coated/Mill Finished Primer Alu.Skin



**ACP Manufacturer Since 2000**

[www.alusignpanel.com](http://www.alusignpanel.com)

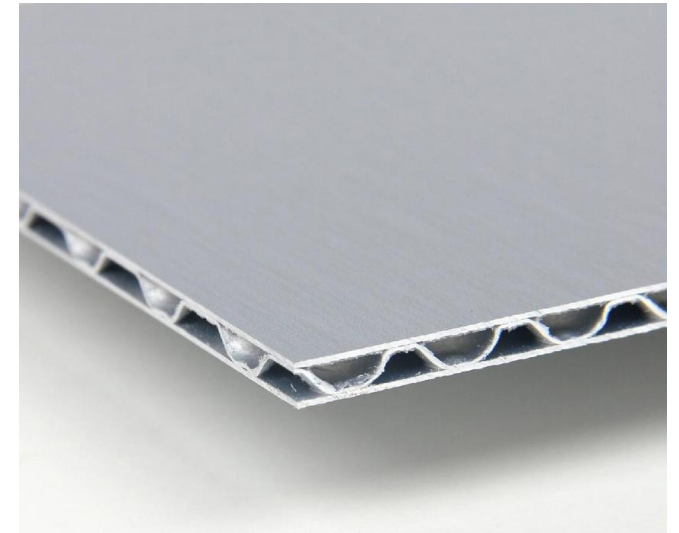
# NEW PRODUCTS

## A2 FR Aluminum Corrugated Composite Panel (ACCP)

02

### Main Specification

- **Width:** 1220mm, 1250mm for order selection;
- **Length:** as per order, <5800mm is better; recommend 2440mm;
- **Panel thickness:** recommend 3mm, 4mm, 6mm;
- **Aluminum thickness:** 0.50/0.30/0.50mm (top/middle/bottom);
- **Coating:** PVDF Kynar, Polyester(PE);
- **Core:** Aluminum corrugated core;
- **Standard size:** 1220\*2440mm (4'\*8')
- Raw material is all using AA3003 series Aluminum.



**ACP Manufacturer Since 2000**

[www.alusignpanel.com](http://www.alusignpanel.com)



A2 FR Grade

## NEW PRODUCTS

### A2 FR Aluminum Corrugated Composite Panel (ACCP)

02

**MA**  
2015000586E

**ILAC-MRA CNAS**  
中国认可  
国际互认  
检测  
TESTING  
CNAS L0690

## TEST REPORT

№: WT2017B03D00709

SHANGHAI JIXIANG  
COMPOSITE PANEL CO., LTD.

Entrusted by

Sample Name  
ALUMINIUM CORRUGATED  
COMPOSITE PANEL

Test Type  
Entrustment test

National Research Center of Testing Techniques  
for Building Materials

WT2017B03D00709

国检集团

National Research Center of Testing Techniques  
for Building Materials  
Test Report

№: WT2017B03D00709 Page 2 of 2

No.	Test Item	Requirements of Standard	Test Results	Individual Conclusion		
1	Burning behavior Level A2	PCS of external non-substantial component (Coating)	$\leq 4.0 \text{ MJ/m}^2$	$0.4 \text{ MJ/m}^2$	pass	
		PCS of internal non-substantial component (Polymer film)	$\leq 4.0 \text{ MJ/m}^2$	$3.8 \text{ MJ/kg}$	pass	
		PCS of substantial component (Aluminum corrugated core)	$\leq 3.0 \text{ MJ/kg}$	$0 \text{ MJ/kg}$	pass	
		PCS of substantial component (Aluminum plate)	$\leq 3.0 \text{ MJ/kg}$	$0 \text{ MJ/kg}$	pass	
		PCS of monolithic product	$\leq 3.0 \text{ MJ/kg}$	$0.9 \text{ MJ/kg}$	pass	
		FIGRA <sub>0.2MJ</sub>	$\leq 120 \text{ W/s}$	$9 \text{ W/s}$	pass	
		THR <sub>600s</sub>	$\leq 7.5 \text{ MJ}$	$1.2 \text{ MJ}$	pass	
	Extra information	LFS	No ignition phenomenon of filter paper	No ignition phenomenon of filter paper	pass	
		s1	TSP <sub>600s</sub>	$\leq 50 \text{ m}^2$	$14 \text{ m}^2$	pass
		d0	SMOGR	$\leq 30 \text{ m}^2/\text{s}^2$	$1 \text{ m}^2/\text{s}^2$	pass
t0		Flaming droplets/particles within 600 s	no flaming droplets/particles within 600 s	no flaming droplets/particles within 600 s	pass	
		Smoke toxicity	Reach Quasi Security level-one ZA <sub>1</sub>	Reach Security level-two AQ <sub>2</sub>	pass	

Installation instructions of burning sample (GB/T 20284-2006)  
1. According to the GB/T 20284-2006 sample §2.2a) provisions for installation.  
2. The sample back is a calcium silicate board of thickness 12mm, density 1200kg/m<sup>3</sup>, size 1000mm×1500mm, 570mm×1500mm.  
3. The sample is an inhomogeneous product. The fire surface is the side of decorative aluminum plate.

**Remarks:** The test results relate to the behavior of the test specimens of a product under the particular conditions of the test; they are not intended to be the sole criterion for assessing the potential fire hazard of the product in use.

End

Test Institution Address: The South Mansion of China Building Materials Academy, Guanzhuang, Chaoyang District, Beijing, China Telephone: +86-010-65728538 Post Code: 100024

国检集团



ACP Manufacturer Since 2000

www.alusignpanel.com



## Color Coated Aluminum Coil

**Raw Material:** the alloy of Aluminum AA1100, AA3003, AA5005;

**Paint:** Polyester or PVDF Ky;

**Specification:**

- Thickness: 0.02mm~0.60mm;
- Width: 1240mm, 1270mm, 1520mm, 1570mm;
- Color: refer to our standard COLOR CHART, also can produce according to customer requirement;
- Max Diameter: 1200mm;
- Weight: 2.50 Ton/Coil; 3.00 Ton/Coil;
- Interior Diameter: 505mm or 405mm;

**ACP Manufacturer Since 2000**

[www.alusignpanel.com](http://www.alusignpanel.com)





03

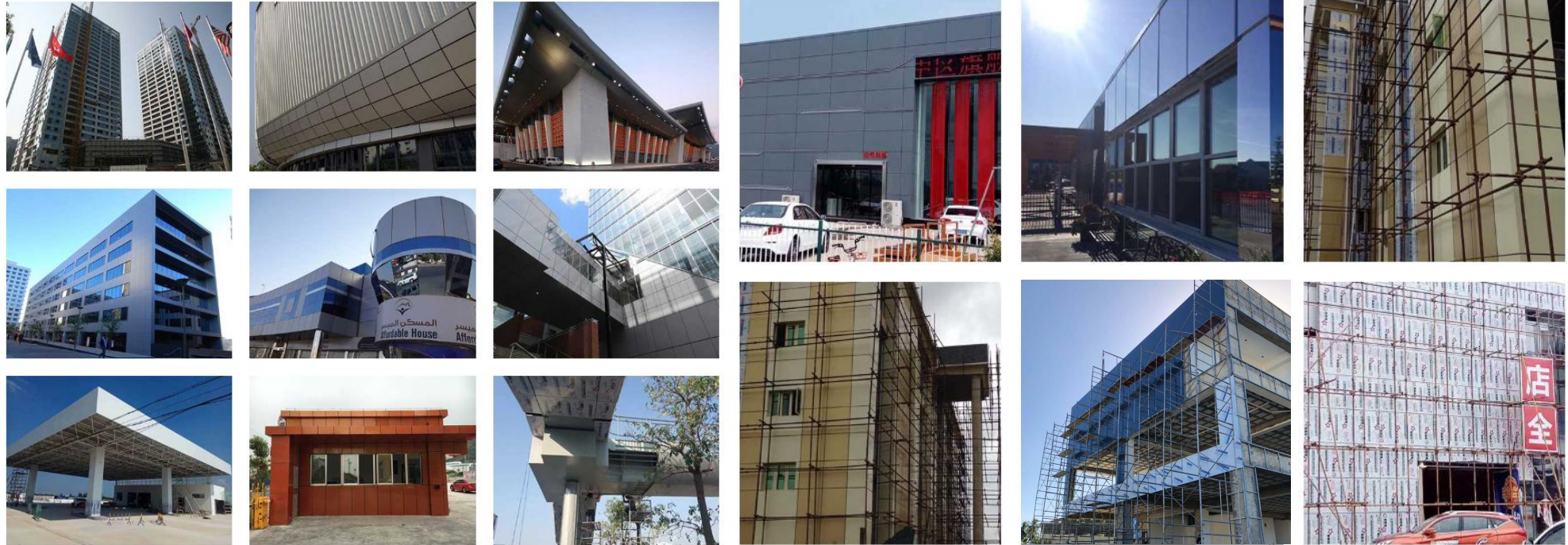
## Main Projects

- ❑ Exterior Wall Cladding
- ❑ Interior Wall Decoration
- ❑ Signage

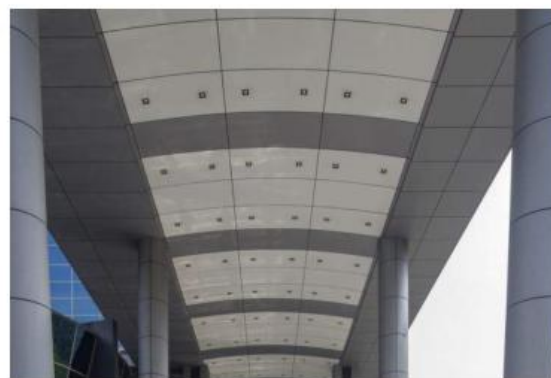




# Exterior Wall Cladding

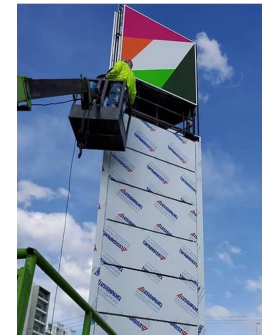


# Interior Wall Decoration





# Signage





# Welcome to be partner of us!

