



TOP GRADE PRODUCTS.

**COLOR
CHART**

ISO 9001 / 14001, OHSAS 18001

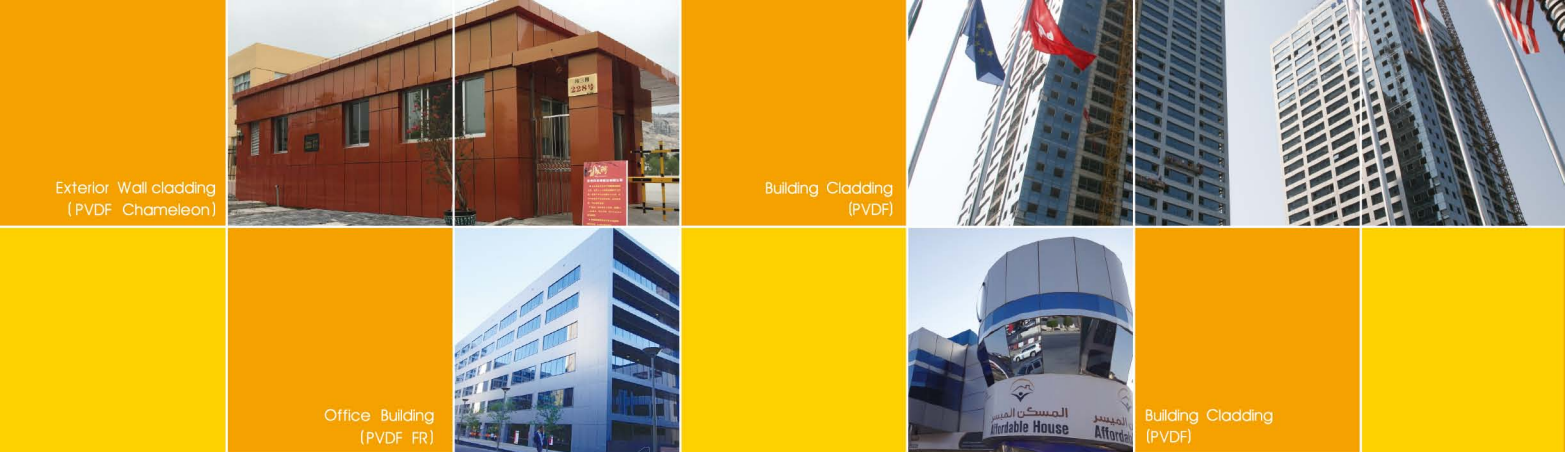


Wenzhou Jixiang Composite Panel Co.,Ltd has specialized in manufacturing Aluminum Composite Panel (ACP) since 2000. Located in Wenzhou, Zhejiang Province, China, it's a 50 minute drive from Wenzhou International Airport and 40 minute away from the high speed train station (Yueqing or Wenzhou South station).

We currently have over 300 employees including 8 engineers focused on the research and development of our Aluminum Composite Panel system. Our daily output for ALUSIGNPANEL, YBOND ACP is 26,790 square meters. We offer PVDF, FEVE and polyester coatings and fire resistant FR/ polyethylene PE cores for our ACP. Convention centers, hospitals, residential & commercial buildings are just a few popular examples of projects that we supply for.

Our company is ISO9001:2008 certified in quality management systems, ISO14001 :2004 certified in environmental management systems and OHSAS18001 certified for Occupational Health and Safety and BSCI (Business Socila Compliance Initiative) certification. Our ACP also has passed SGS,ASTM CE (attestation of European Union) and CTC (China Building Materials Certification).

We have built sales networks in 23 provinces in China, as well as exported to many countries such as USA, Canada, Mexico, Brasil, Chile, Australia, UAE, Nigeria, European countries and many more. We are a global enterprise for exporting for Aluminum Composite Panel.



Exterior Wall cladding
(PVDF Chameleon)

Building Cladding
(PVDF)

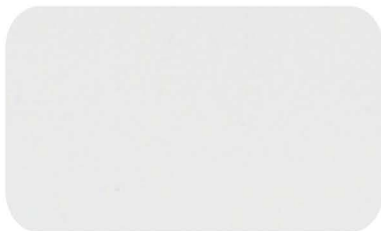
Office Building
(PVDF FR)

Building Cladding
(PVDF)

Metallic & Solid Colors



SJ-8001 Flash Silver



SJ-8011 Pure White



SJ-8013 Off White



SJ-8002 Silver Grey



SJ-8014 Ivory White



SJ-8049 Black



SJ-8004 Champagne Silver



SJ-8005 Grey Metallic



SJ-8048 Galaxy Black



SJ-8006 Champagne Golden



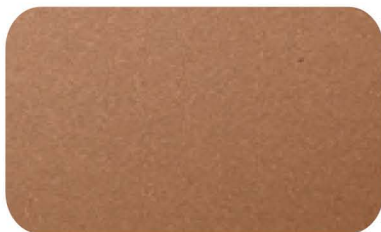
SJ-8008 Flash Gold



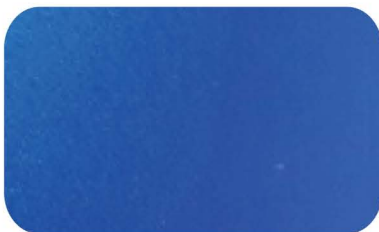
SJ-8030 Jade Metallic



SJ-8003 Aluminium



SJ-8009 Brown Copper



SJ-8080 Blue Metallic



Metallic & Solid Colors



SJ-8037 Pure Yellow



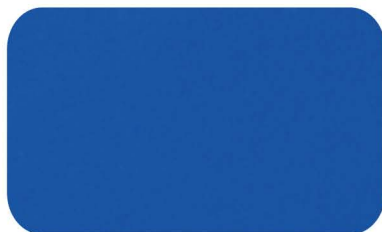
SJ-8034 C-Red



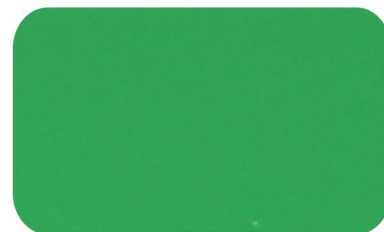
SJ-8025 Post Green



SJ-8038 Lemon Yellow



SJ-8017 Telecom Blue



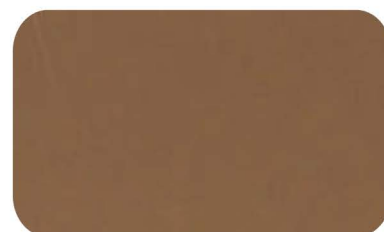
SJ-8021 Apple Green



SJ-8040 Orange Red



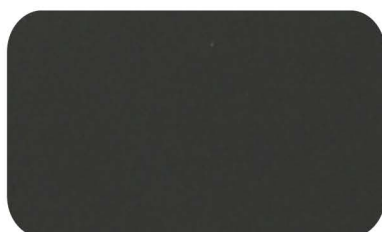
SJ-8019 Sea Blue



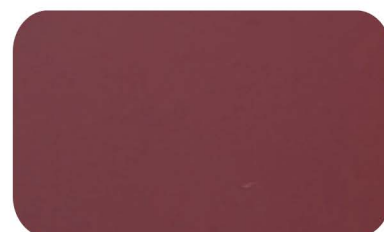
SJ-8046 Coffee Brown



SJ-8051 Light Gray



SJ-8052 Dark Gray



SJ-8043 Deep Rose

Pearl Colors



SJ-8841 Pearl White



SJ-8817 Pearl Red



SJ-8821 Pearl Black



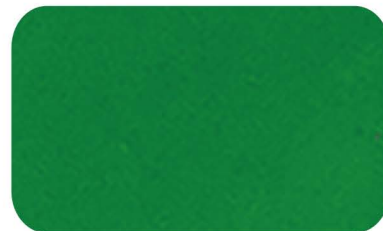
Glossy Colors



SJ-8825 Glossy White



SJ-8826 Glossy Red



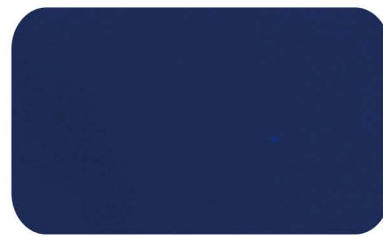
SJ-8827 Glossy Green



SJ-8828 Glossy Black



SJ-8831 Glossy Yellow

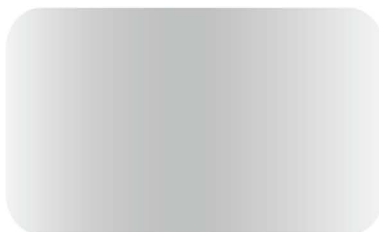


SJ-8832 Glossy Blue

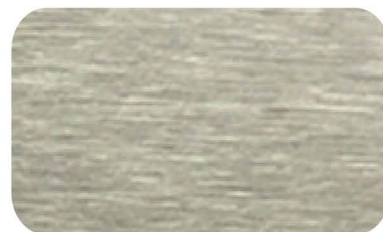
Mirror & Brushed & Timber & Stone Colors



SJ-8822 Golden Mirror



SJ-8823 Silver Mirror



SJ-8053 Brushed Silver



SJ-T1 Timber Look



SJ-T2 Timber Look



SJ-8058 Brushed Golden



SJ-T3 Timber Look



SJ-S1 Stone Look



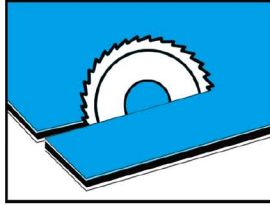
SJ-S2 Stone Look

Processing



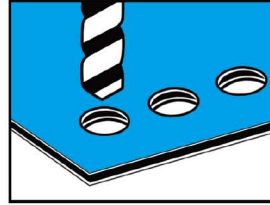
Gluing

Use standard metal and aluminium adhesives. Ensure you avoid contact with the polyethylene centre some adhesives will attack and dwcay the core, the use of conventional double faced tapes is acceptable.



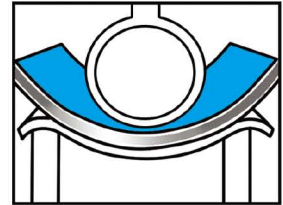
Sawing

Circular Saw; trapezoidal/ flat tooth blade Flat teeth chamfered at 45° carbide tipped.



Drilling

YBOND is easily drilled-we suggest for best results, the use of bits designed for drilling aluminium and plastic are used.



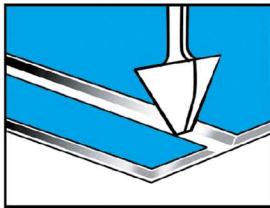
Bending

Use a folding table.
Min inside radius $r = 15t$ (t =panel thickness).



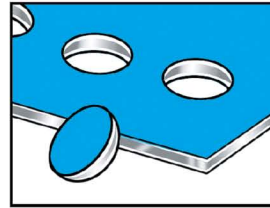
Digital printing

There have been numerous inks tested for compatibility and adherence to YBOND. The company has the large-scale digital printing machine for the customers.



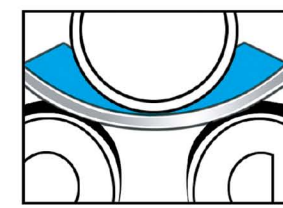
Slotting

Grooves can also be easily cut using a special cutting machine that comes complete with a guide. The V shaped groove is automatically cut into YBOND, which can then be easily fold by hand. A minimum thickness of 0,3mm of the polyethylene must be left on the bottom of back of the decorative face.



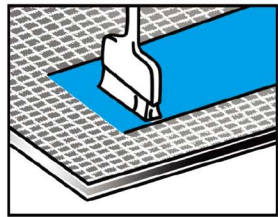
Punching

Use a steel band tool on a punching base for 2mm and 3mm thickness. Conventional punching machines are excellent for this process.



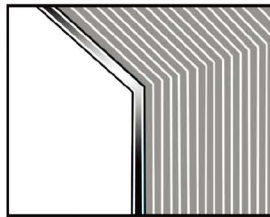
Roll bending

3-roller panel bender is preferable for bending large internal diameters.



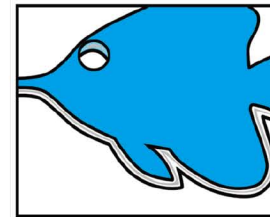
Silk-screen

There have been numerous inks tested for compatibility and adherence to YBOND.



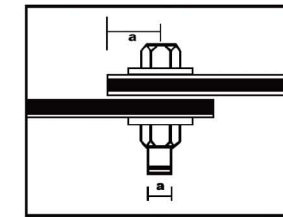
Folding

YBOND Can easily be folded by slotting or routing a groove on the rear of the product, as describes in the slotting and routing section.



Contour cutting

YBOND can laminated manually or by machine using cast or calendared self adhesive foil. The quality of polyester finish ensures it does not come off if the foil is changed, photographs can be applied with adhesive film or wet dispersion adhesive, panel must be clean and free from grease.

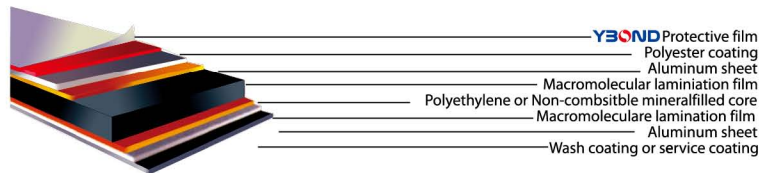


Clamping and bolting

Can be clamped with a serrated corner joint and bolt sections for YBOND thickness of 3mm and 4mm.
When bolting, $e=2D$ is the formula to use to calculate the distance of fixing to the end of the panel

Constitution Structure:

- YBOND Protective film
- PVDF/ Polyester coating
- Aluminium sheet
- Macromolecular lamination film
- Polyethylene or Non- combustible mineral filled core
- Macromolecular lamination film
- Aluminium sheet
- Wash coating or service coating



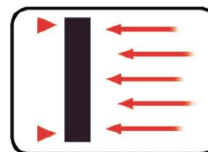
Easy Maintenance



Easy Processing



Non-Toxicity and Safety

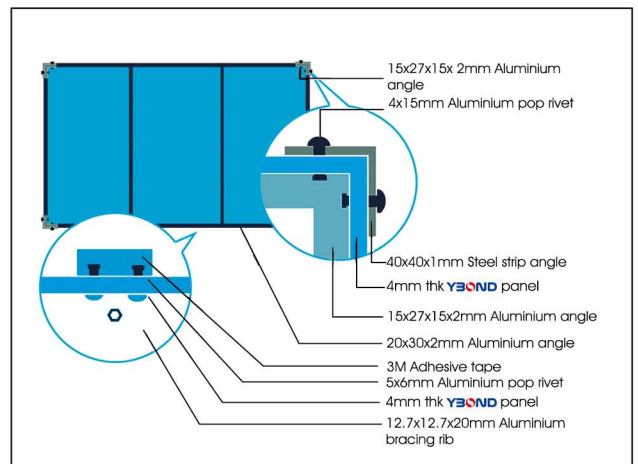
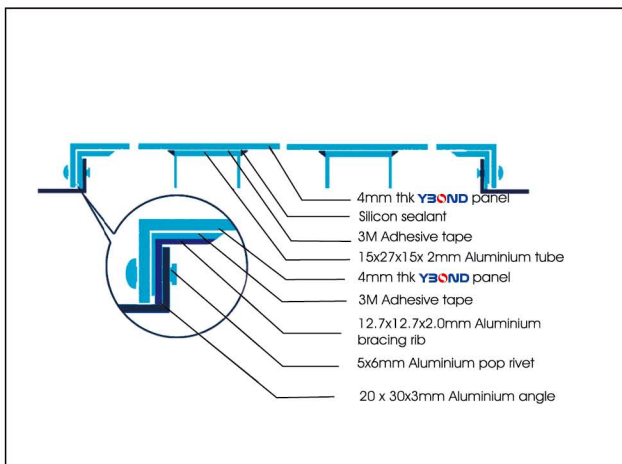
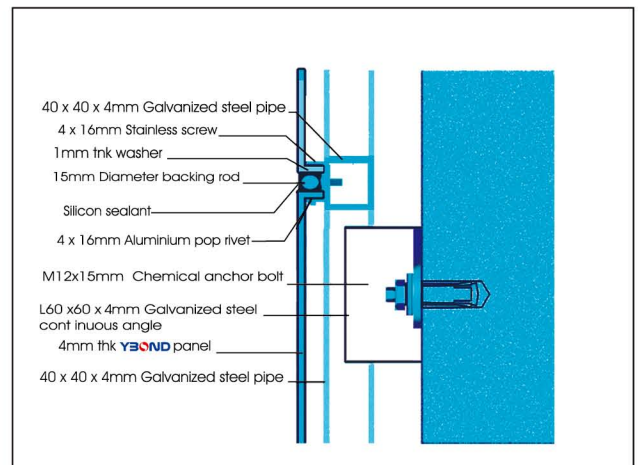
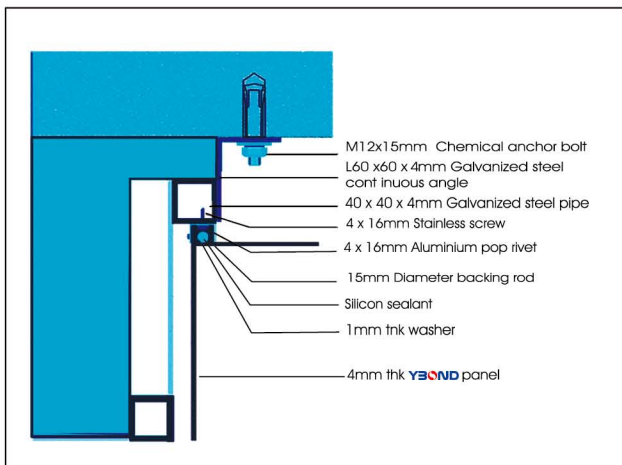
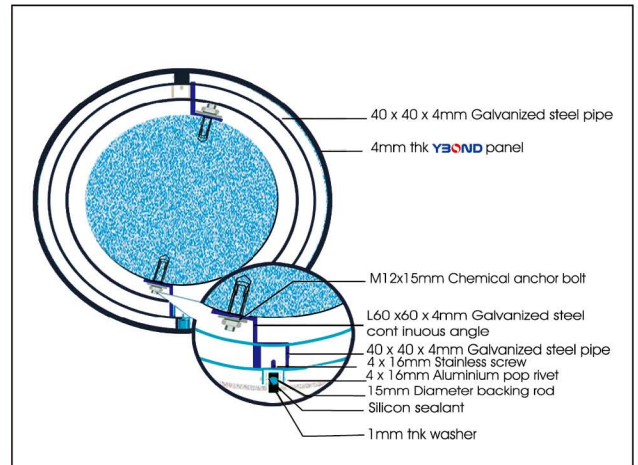
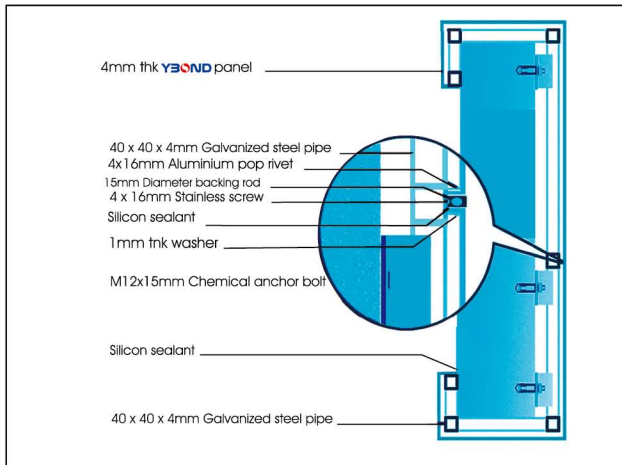


Super Peeling Strength



Excellent Coating Property

■ Installation Tips:



■ Specification:

Width: 1220MM , 1250MM , 1500MM

Length: Upon request , better less than 5800MM . Recommend 2440MM , 4050MM , 5000MM

Panel Thick: 2MM , 3MM , 4MM , 5MM , 6MM

Alu.Skin Thick: 0.10MM to 0.50MM ; Recommend 0.15MM , 0.21MM , 0.30MM , 0.40MM .

Standard Size: 1220 * 2440MM * 3MM and 4MM . Also custom size accept .



Aluminium Composite Panel

make your innovation

WENZHOU JIXIANG COMPOSITE PANEL CO.,LTD
NO.228 WEISAN RD ,YUEQING ECONOMY INDUSTRY ZONE , WENZHOUCITY ,ZHEJIANG PROVINCE ,CHINA . 325600
Tel : + 86 577 62999101 Fax : +86 577 62999102
E-mail : info@ybond.com.cn Web : www.alusignpanel.com www.ybond.com.cn

